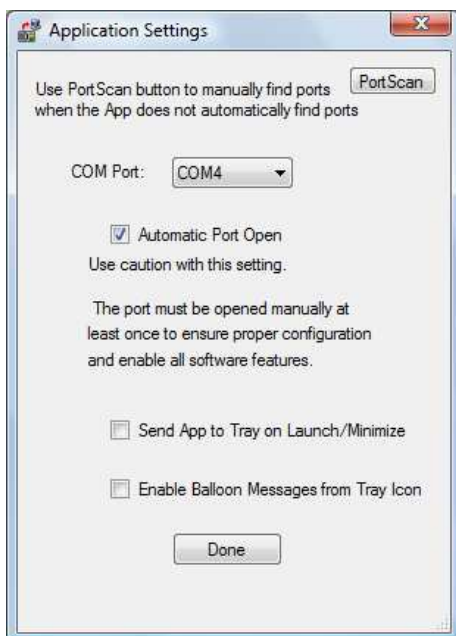


How to make IDWedge run automatically on PC start up

The document assumes you have already installed IDWedge on the PC and have successfully installed the USB drivers for the Scanner. You should be able to scan cards and have already set up your formula before attempting to run automatically. Please refer to the IDWedge Docs folder for instructions on installation of USB drivers and for the IDWedge Users manual.

Step 1: Configure IDWedge to automatically open the port

With the Scanner connected to the PC, and the IDWedge app running, select Configuration-> App settings, and select the check box for “Automatic Port Open”

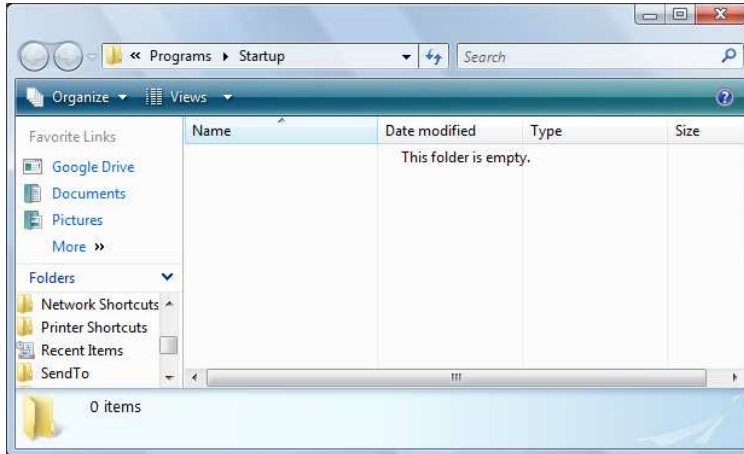


If you plan on running the app as a tray icon, then click on “Send App to Tray on Launch/Minimize”. If you desire to see user messages like “scan again” then select “Enable Balloon Messages from Tray Icon”

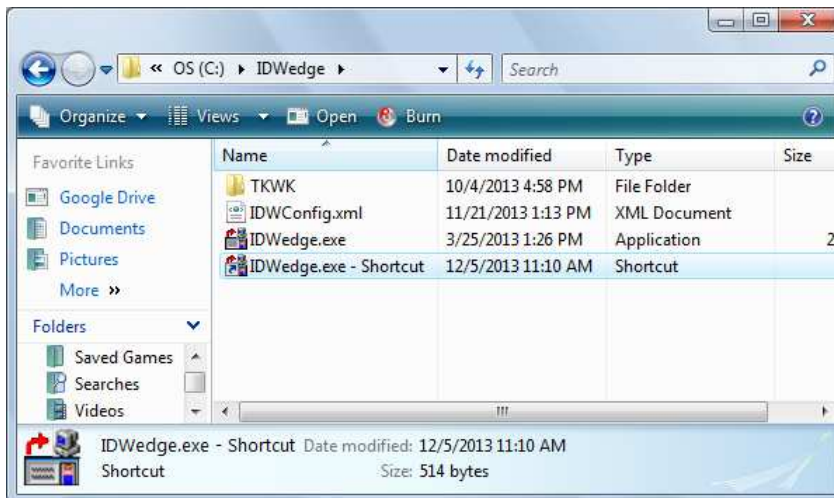
NOTE: The application should already have the correct port selected before checking the Automatic Port open. Please verify by exiting the app and manually opening the port before checking the Automatic Port open box.

Step 2: Create App Short Cut and place in the PCs startup folder

On the PC, click the Start button, click All Programs, right-click the Startup folder, and then click Open.



Using another windows explorer window, open the IDWedge folder located at C:\IDWedge and right click the IDWedge icon and select Create short cut.



Drag the shortcut to the Start up folder, then next time windows starts the application should automatically start.

