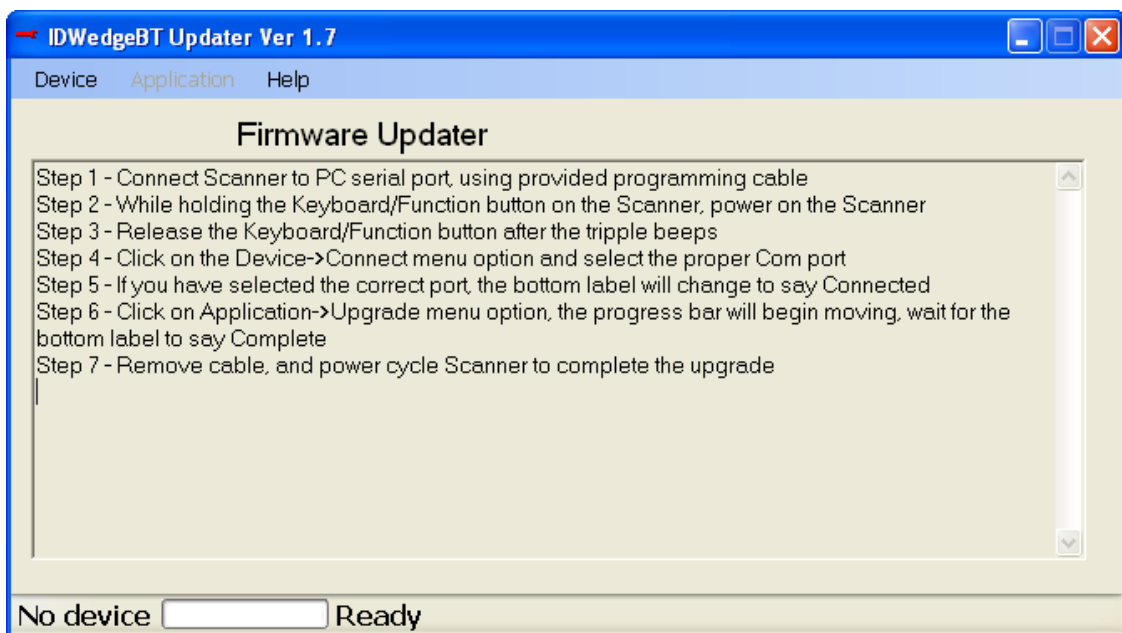


IDWedgeBT Application Upgrade Quick Guide

To perform a firmware upgrade of the IDWedgeBT series scanner you will need:

1. The latest version of the IDWedgeBT Updater.exe file.
2. The special serial programming cable from TokenWorks.
3. A Windows PC with a serial port, or a USB->Serial adapter from FTDI.

Below is a screen shot of the IDWedgeBT Updater app.



As you can see from the on screen instructions, the bottom label sends status messages, and in this case we see that no device is connected yet.

The most recent version of the updater can be found at:

<http://www.idscanner.us/products/idwedgebt-application-updater/>

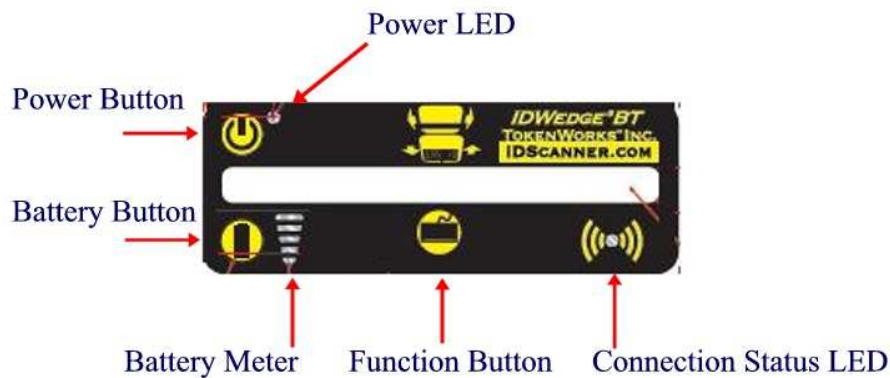
These are the instructions from the screen shot:

1. Connect Scanner to PC serial port, using provided programming cable
2. While holding the Keyboard/Function button on the Scanner, power on the Scanner
3. Release the Keyboard/Function button after the tiple beeps
4. Click on the Device->Connect menu option and select the proper Com port
5. If you have selected the correct port, the bottom label will change to say Connected
6. Click on Application->Upgrade menu option, the progress bar will begin moving, wait for the bottom label to say Complete
7. Remove cable, and power cycle Scanner to complete the upgrade

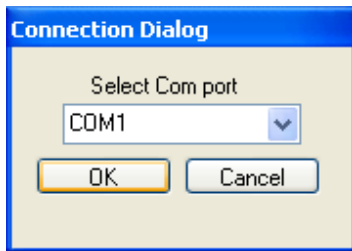
The Scanner should be powered off while making the connection to the PC. If you do not have a serial port on your PC you will need to get a USB->Serial adapter from FTDI to allow you to connect the DB9 serial programming cable to the PC.

Once all the required items are available, you are ready to begin the upgrade process.

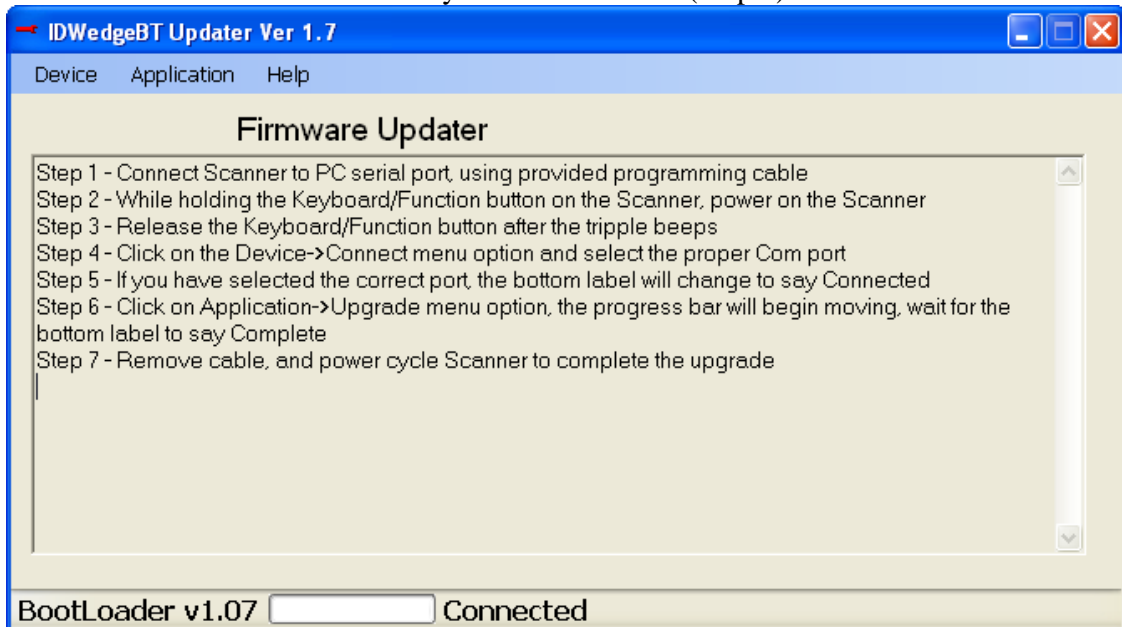
Steps 2-3 involve putting the scanner into programming mode; you need to hold the function button while powering on the scanner. Wait for the triple beeps, and then release the function button.



Step 4 involves selecting the correct Com port.



Below is a screen shot of a correctly connected device (Step 5)

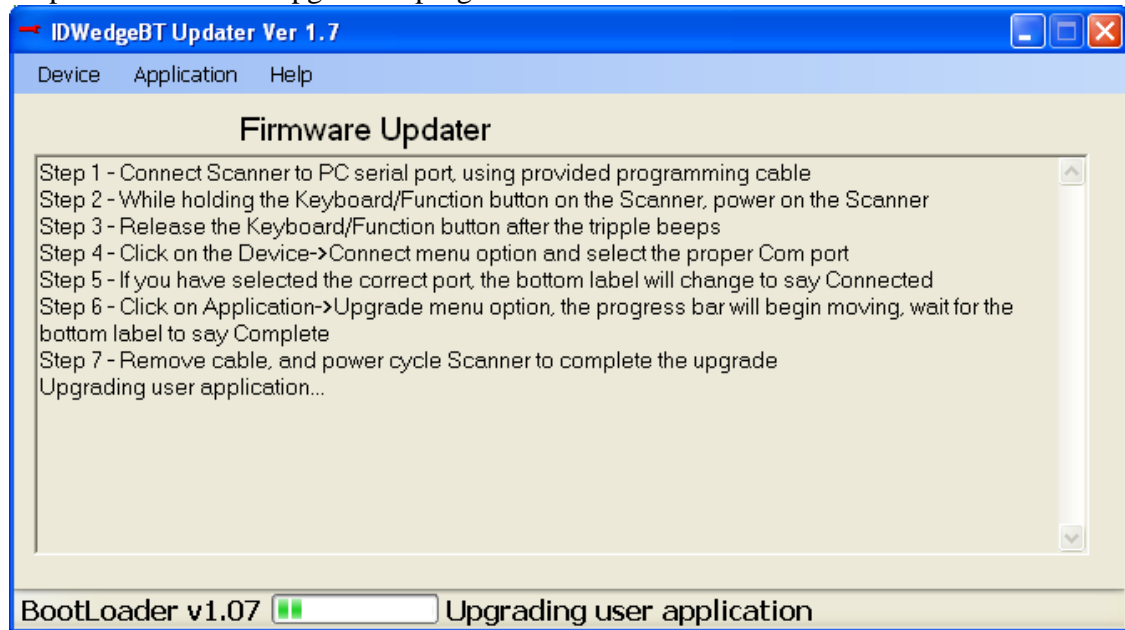


Notice the Status label has changed from the first screen shot.

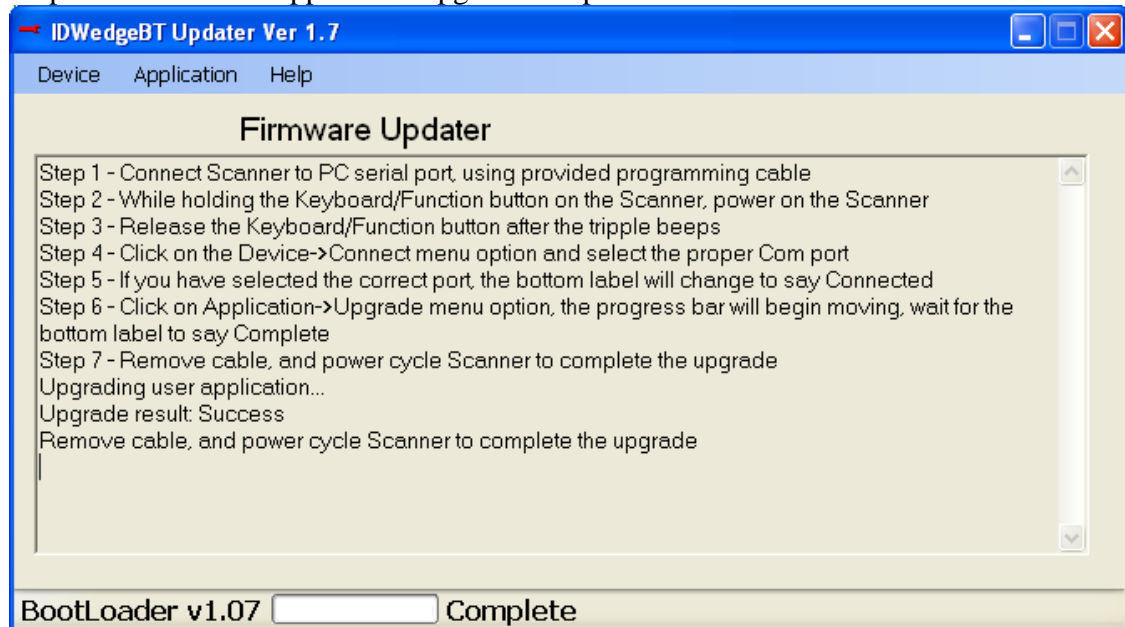
The scanner is in programming mode, and it is connected to the PC using the correct port.

If you are do not get this message, you may need to try another Com port, or you may need to power off and try steps 2 and 3 again, keep holding the Keyboard/Function button until you hear the triple beeps.

Step 6 screen shot of upgrade in progress



Step 7 screen shot of application upgrade complete



Remember to remove the cable, and power cycle the Scanner to complete the upgrade.

Appendix 1 – USB to Serial Adapter

Below is the recommended USB->Serial adapter cable, it can be purchased from many online retailers, including Amazon.

Windows 7 Compatible USB Serial Adapter FTDI Chip RS232 DB-9 920K with TX/RX LED



Model: USA-FTDI-A12
Product: USB to RS-232 Converter
Manufacturer: Gearmo