

IDVisorTouch Installation Guide

This document describes the steps required to install the IDVisorTouch software. You will erase the SD card and load it with the contents of the IDVisorTouch SD card image archive.

This method describes to process to initialize the SD card

Items required:

- IDVisorTouch unit and power supply
- USB cable
- PC with a USB port
- IDVisorTouch SD card image archive extracted to a folder on the PC

The unit should be plugged into AC power during the entire procedure

While the IDVisorTouch app is running, make a backup of your data by tapping Setup->Database->Backup. The Backup will occur on the date/time you device is set to.

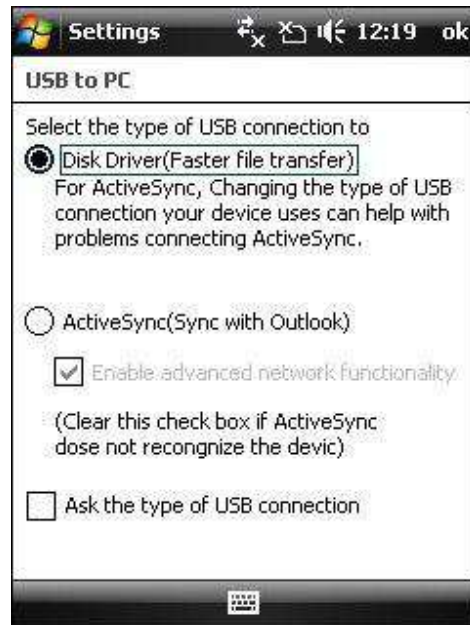
If the IDVisorTouch application is running, close the application by tapping Setup->Close application (default pin code is 5678). You should see a blue windows type screen once the application is closed.

Next you will have to remove the IDVisorTouch application or else it will re-start automatically within about a minute. Tap on the Start icon in the top left of the blue screen, then tap Settings->System and scroll down and tap the 'Remove Programs' icon.

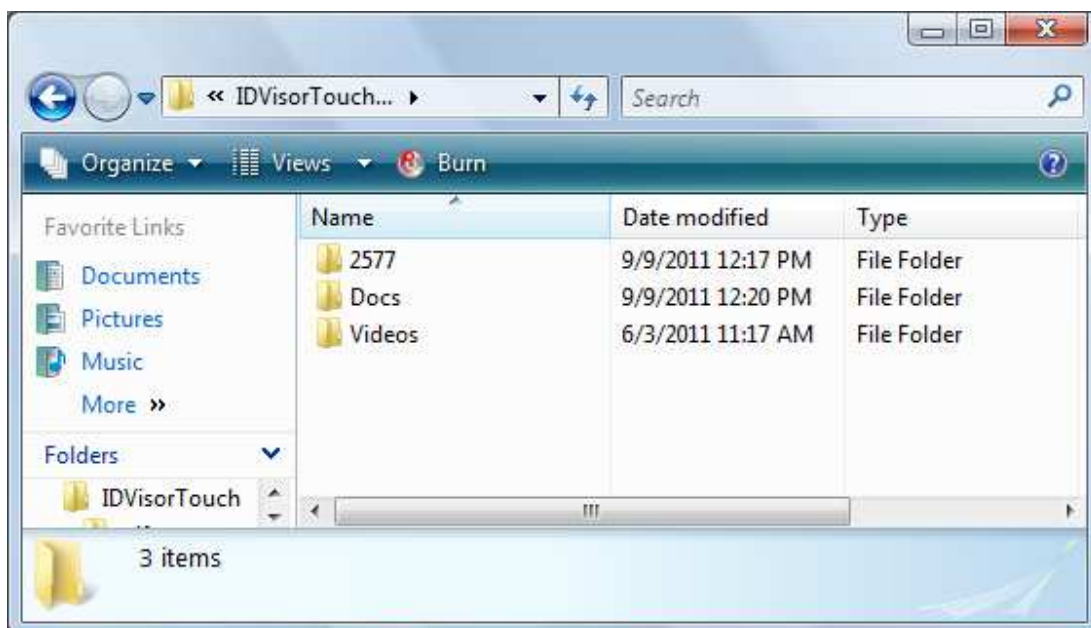
Tap the item called 'TokenWorks IDVisorTouch, it should turn blue, then tap the button labeled 'Remove' and then confirm by tapping Yes on the 'Remove Program' prompt. Once the program is removed, tap ok in the upper right corner.

The rest of this document assumes the app is closed and Windows is running.

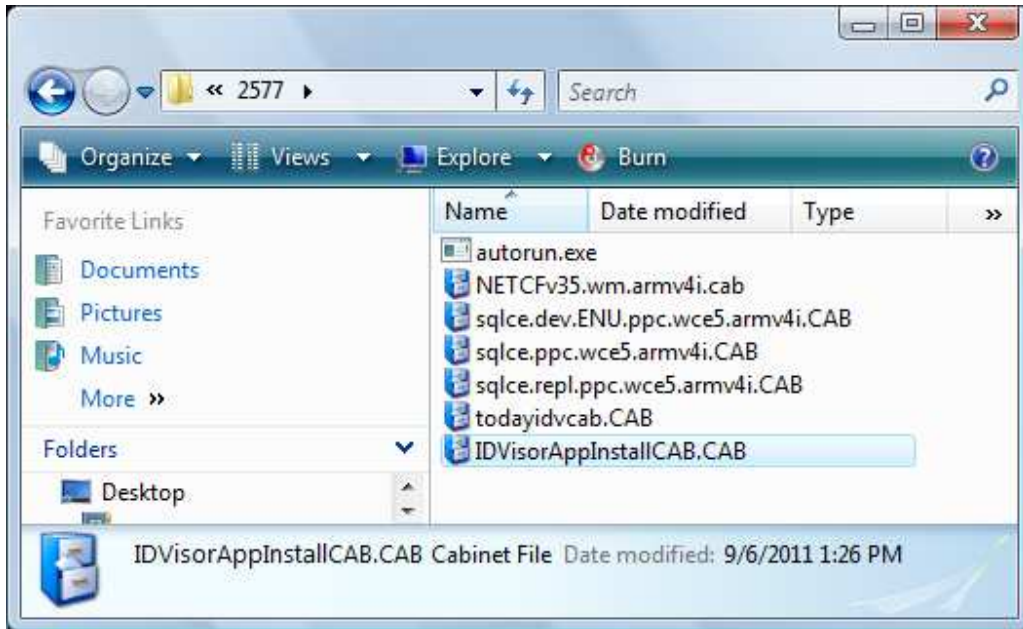
Go to Settings->Connection->USBtoPC and set the USB connection to Disk Driver (top radio button) and click ok.



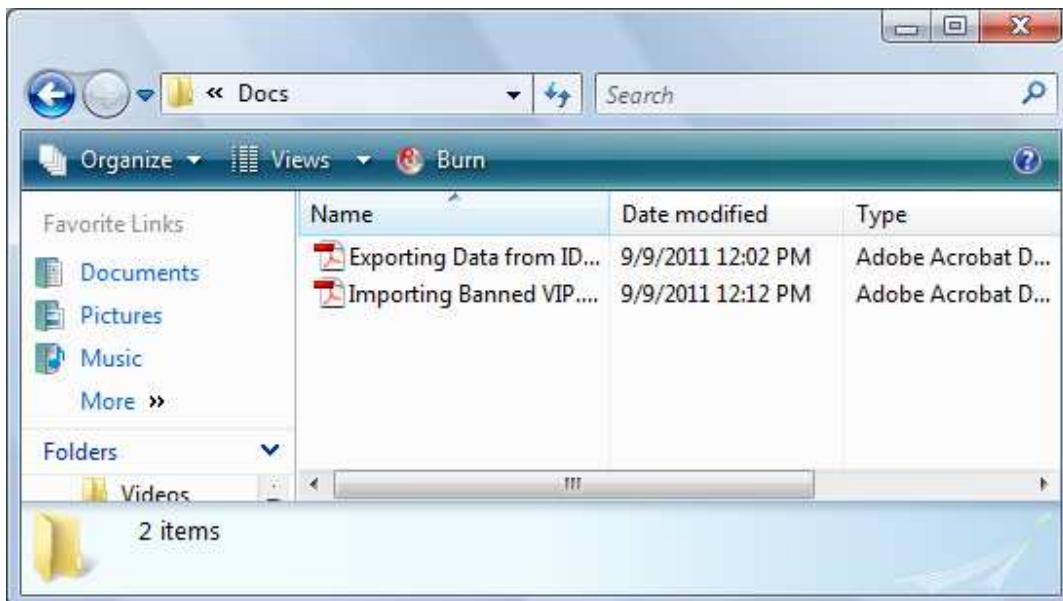
1. Connect USB cable to PC and using windows explorer open the new USB flash drive and delete the folders called 2577, Docs, Videos.
2. Locate and open the folder called IDVisorTouch SD card image on the PC, the file structure should look like the following screen shots:



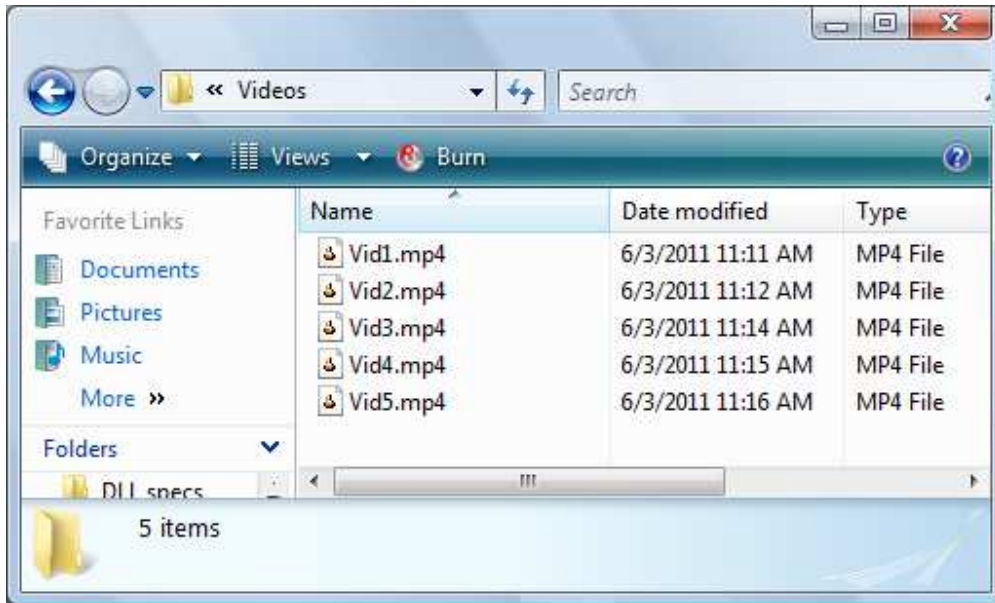
The contents of the 2577 folder look like this:



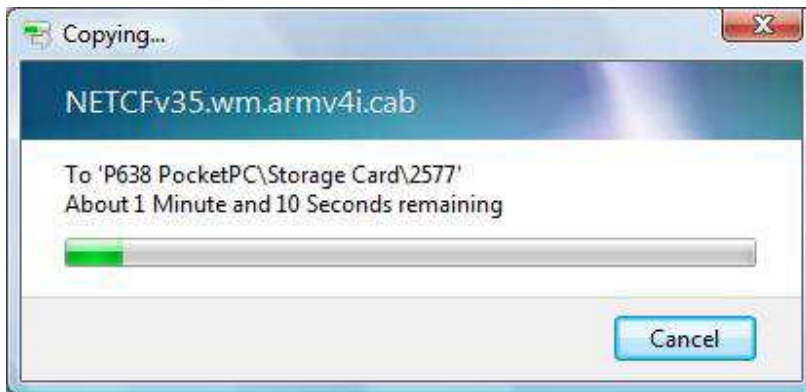
The contents of the Docs folder look like this:



The contents of the Video folder look like this:



3. Copy the three folders; 2577, Docs, Videos to the SD card. During file copy you should see several messages indicating that the file copy is occurring, this may take several minutes.



Disconnect the USB cable after verifying the all the files have been copied correctly.

4. You will have to perform a clean boot to get the SD card installation process going. Go to Start->Settings->System->Clean boot and type in '1234' when prompted, the phone will power down, and the clean boot will take several minutes.

5. Answer-Yes to the “Do you want to install from SD card?” message box, and then select the ‘Install to Device’ option on the following screen. You will see an installer progress screen and then a message indicating that the IDVisorAppInstallCAB.cab was successfully installed. Click ok.

If you do not see an Install message, then the installation may have gone to the background, click on the top right arrow icon to display background apps, you may have to wait until the drop down menu reveals the background apps, choose installation when you see it.

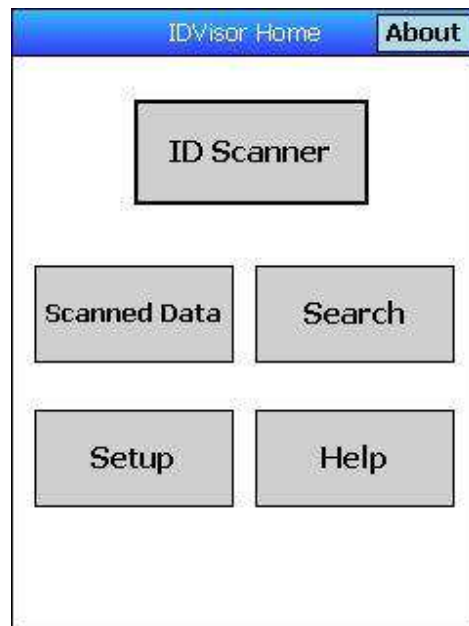
6. You will see similar screens to install the other cabs, choose the ‘Install to Device’ option for:

NETCFv35.wm.armv4i.cab
sqlce.dev.ENU.ppc.wce5.armv4i.CAB
sqlce.ppc.wce5.armv4i.CAB
sqlce.repl.ppc.wce5.armv4i.CAB
todayidvcab.CAB

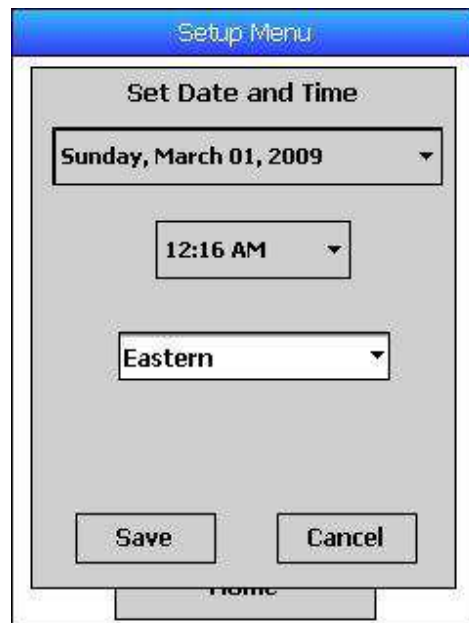
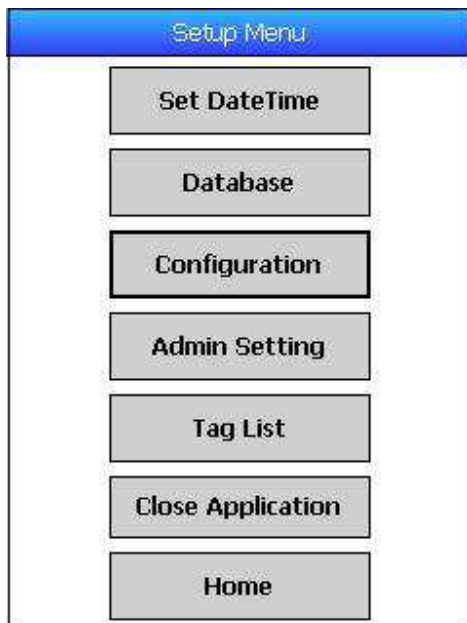
IF you do not see these installations screens, then the installation may have go to the background again, if so follow the above instruction

7. After all the CABs have been installed, you should see a message box that indicates *Installation Complete* click ‘ok’. The phone will turn off, and back on automatically, and you will see the blue screen and the IDVisorTouch icon:

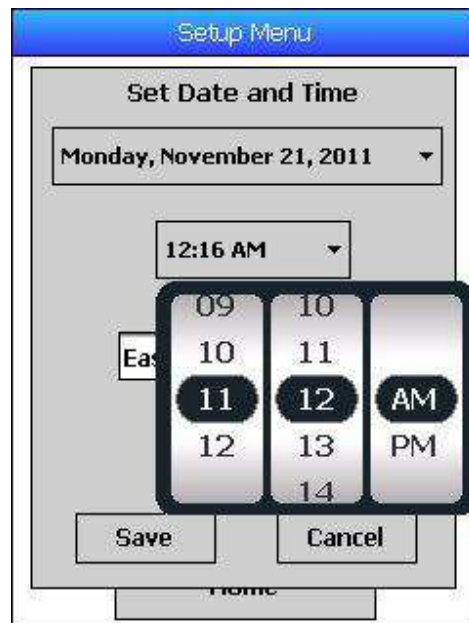
This is the icon screen, tap the icon and start the IDVisorTouch application.



8. Tap on Setup to show the Setup menu, Tap on Set DateTime to show the clock display buttons, then tap on the individual display buttons to show the actual controls.



Date control



Time control

Note: these controls act like rolling wheels, try using your fingers instead of the stylus, when you are done, tap the date and time labels to hide the controls.

9. Tap on Configuration, then tap on Advanced Setup, then navigate to the ID Reader Tab
The pin codes are '5678' for the Setup menu buttons.

The Configuration menu is displayed with a blue header. It contains several settings, each with a checked checkbox and an 'On' button. The settings are: Tag Check Enable, Tag require PIN, Antipassback Enable, Antipassback Time (set to 8 hours), Alcohol Age Check, Alcohol Age (set to 21), Tobacco Age Check, and Tobacco Age (set to 18). At the bottom, there is an 'Advanced Setup' button. The bottom navigation bar shows 'Save', a keyboard icon, and 'Cancel'.

Configuration

The Advanced Setup menu is displayed with a blue header. It contains several sound settings, each with a 'Snd' label and a dropdown menu. The settings are: Birthday (Happy_Bday_vibes_sl), Scan OK (DING), Scan Again (Sproink), ID Expired (Twosproinks), Tagged (Female_ID_Tagged), Under Age (Female_underage), ID Rescan (JungleError), and Bad Format (Vibrate). At the bottom, there is a tab bar with 'Sound', 'Banned/VIP', 'ID Reader', and 'DB Mgmt'. The bottom navigation bar shows 'Save', a keyboard icon, and 'Cancel'.

Advanced Setup

The ID Reader tab is displayed with a blue header. It features a large 'Initialize Reader' button in the center. Below the button, there is text that reads: 'Connect to ID reader and initialize it. Get device serial number.' At the bottom, there is a tab bar with 'Sound', 'Banned/VIP', 'ID Reader', and 'DB Mgmt'. The bottom navigation bar shows 'Save', a keyboard icon, and 'Cancel'.

IDReader tab

10. Tap on Initialize Reader (Scanner must have power on, make sure there are no other IDVisorTouch Scanner powered on nearby!) you will see prompt asking to add IDWedge to the Bluetooth device list, answer Yes.

11. Enter pin code of 5678 when prompted, then tap Next at bottom right.

12. You should see a device found message and hear 3 beeps from the reader, this has to happen or you did not connect. If the device has a number 0, then the connection did not occur, click ok and try again. If you see an error and, go to step 10 and try again. If you continue to see error, you may have to troubleshoot the ESEEK (wrong configuration) or the BT may not be working.

13. Tap save, and exit the Config screens and return to the Setup Menu, Tap Home.

14. On the Home screen tap IDScanner, The Scanner form should launch, ensure the time and date is correct.

15. Scan a test PDF417 barcode and a test Magstripe card to ensure the Scanner is functioning correctly. Ensure that the volume is at an adequate level (eg. Not silent) you should hear sounds when cards are scanned. Tap exit to return to Home screen.

16. Go back to the Home screen and tap help, then play the videos to ensure they were copied, you can tap on the screen to minimize, then close to exit the videos without having to watch them complete.

17. Go back to the Home screen, and tap Setup->Database and tap one of the 'Go' buttons and follow the instructions for exporting, connect the USB cable when prompted and ensure the USB port is functioning correctly by copying the file you exported to the PC, click on the contents to ensure there is data in the file.

18. Go back to the home screen and click the about button, and confirm that the version is correct. The version should match with the version of the IDVisorTouch SD card image.

Example: The archive is called IDVisorTouch SD card image_1.0.8.3.rar and the About screen display is 1.0.8.3 so, the app version and archive version are a match.

19. Update is complete.

To Restore your previous Database, from the home screen tap Setup->Database->Restore (Pin code is 5678). A calendar will appear, tap the 'list files' label at the bottom left of the screen. The screen should display a list of at least one backup file, click on the archive and a prompt should appear listing the backup file selected. Click yes to restore the database. If you see a prompt that says 'No backup file found' you may not have set the clock to the same date that the backup occurred during the very first steps of this procedure. If so, then try moving back by 1 day until you find a backup file.