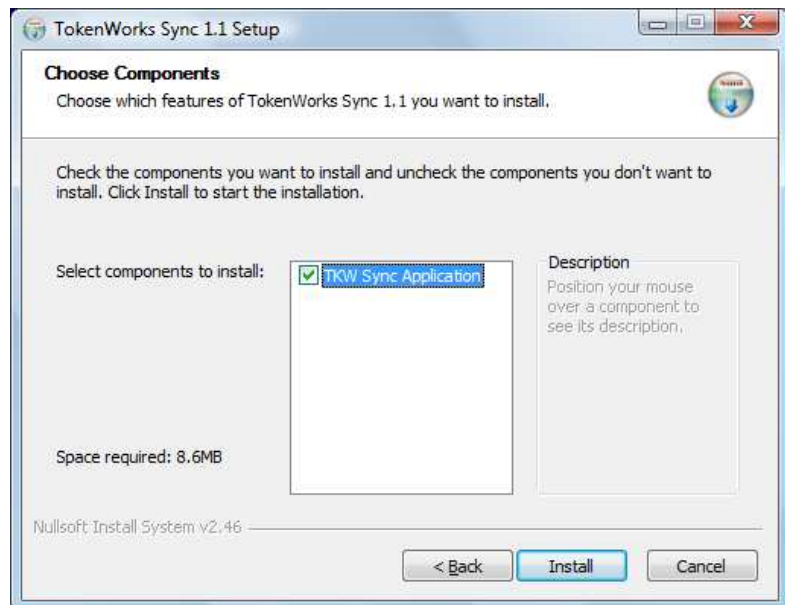


TokenWorksSync® Quick Start Guide

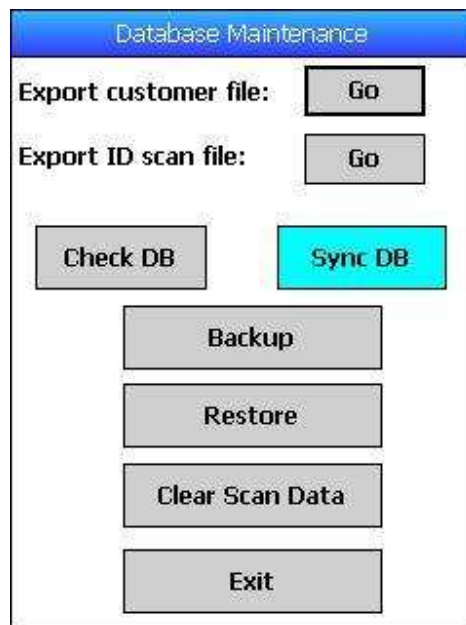
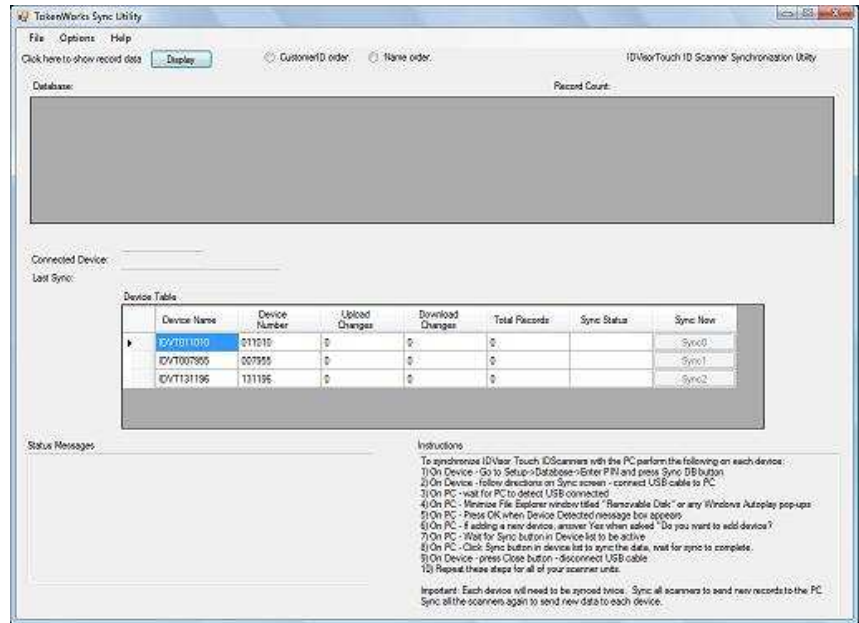
Application Install

- 1.) Install TokenworksSync on the Desktop PC



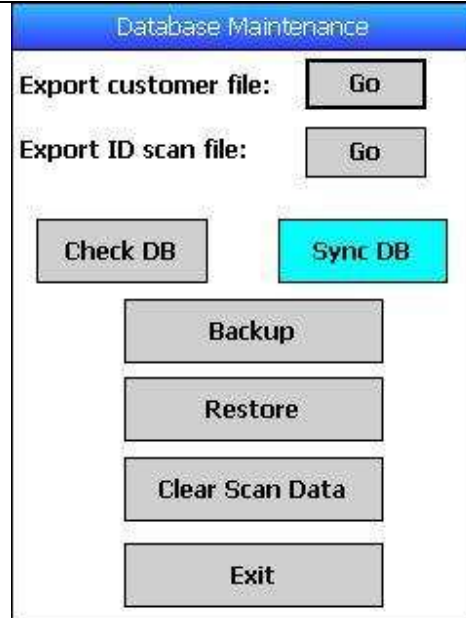
TokenWorksSync Application

1. Make sure the PC and the Scanners all have the same time and date, this is essential for synchronizing.
2. On the Scanners, go to Setup->Database and press Backup button to save the current DB prior to syncing.
3. With the Sync app running on the PC, press the Sync DB button on the Scanner.
4. Follow the instructions listed on the TokenWorksSync application. These instructions will guide you through the sync process
5. Each scanner will be required to be synced twice, once to copy the data to the PC, then 2nd time to copy the merged data back to the device



Verify Sync

Before you sync your scanners, go to Setup->Database and press the Export Customer file, and copy the Customer.csv file to a folder on your PC, you can also note the number of records listed on the Database screen



The screenshot shows a 'Database Maintenance' interface with the following elements:

- Header: Database Maintenance
- Export customer file: [Go]
- Export ID scan file: [Go]
- Check DB [button]
- Sync DB [button]
- Backup [button]
- Restore [button]
- Clear Scan Data [button]
- Exit [button]

After Syncing scanners, repeat the Export Customer file from above, and copy the Customer.csv file to a different folder. You should be able to verify the sync occurred by comparing the two files, and notice that the number of records exported has changed.

TokenWorks

TokenWorks provides the IDWedgeBT scanner to automate and document the ID scanning process using a wireless Bluetooth connection to the host device. The IDWedgeBT scanner can read 2-d Barcodes, and Magnetic ID cards, as well as credit cards and other Magnetic Cards.



www.IDScanner.com - Product Information
www.TokenWorks.com - Company Information

3511 Silverside Rd, Suite 105
Wilmington, DE 19810
Phone: (800) 574 5034
Support@TokenWorks.com
Revision: 1.0 July 2012